



MKT Newsletter

July 6, 2015

Volume 4

EDITOR: AMIE BECKWITH, ASSISTANT EDITOR: DARIN WERTS, TECHNICAL EDITOR: NICK WHISLER

GETTING TO KNOW THE MKT/MVE TEAM

Meet our New Distributor: Company Wrench

Company Wrench and MKT Manufacturing, Inc. come together to offer new fully integrated excavator-hung pile driving systems that are now available for sale or rent. With upgraded functionality and no assembly required, the package is ready to roll off a lowboy trailer and begin driving pile immediately. This new adaptation of the industry proven MKT V-5Esc and V-2Esc vibratory hammer saves on fuel, manpower, and is more environmentally safe. MKT found its start in 1897 manufacturing hand-held drills and steam breakers that were used to build the tunnels under the New York Harbor. In 1985, the MKT product line was purchased by Mississippi Valley Equipment Company. Over the last thirty years, MKT has focused on service the pile driving vibratory hammer industry.

MKT vibratory hammers are one of the leading pile driving attachments due to their simple, rugged design. In the past, other manufacturers have tried to gain a foothold in the vibratory hammer market, but due to more expensive, over complicated systems that were difficult to maintain, the products were not popular. MKT's V-2Esc and V-5Esc attachments are a proven technology that has been used on Crane pile driving applications for the last 20 years and have modified the unit to be able to work from an excavator. With an additional adaptor, operators can drive and extract timber pile, as well as large diameter pipe (from 20 inches to four feet).

Company Wrench's engineering team has fully integrated the excavator-attached system by interfacing the control panel to the machine, installing an auxiliary hydraulic circuit with priority flow control, and modifying the excavator joystick grips for all functions and interlocks. This alleviates the need for an auxiliary power engine and hydraulic hoses running to the attachment, erasing the need for a remote control operator, reducing diesel fuel expenditure by 4-5 gallons per hour, and reducing the risk of environmental contamination due to leaking hydraulic hoses. By integrating all controls to the joysticks, the excavator operator can control all systems from inside the cab. To offer maximum versatility, the modified excavator-hung attachment can still convert to crane-hung scenario with the traditional power unit.

Brian Hendricks



Meet our New Parts Manager:

Brian Hendricks has been hired to be our New Parts Manager. Brian is 33 years old and married to his wife Jennifer and has two children, son Camden who is 10 and daughter Alexa who is 7 and he currently lives in Hillsboro, IL. Brian started out in the Auto Parts Industry in 2001 where he worked his way from a delivery driver to a store manager from 2010-2015. Brian takes pride in delivering the best customer service possible and intends on bringing that same quality experience to MKT/MVE!!

Our next newsletter will be out in October 2015. If you'd like to include a story or information in our next newsletter, please submit to Amie Beckwith @ abeckwith@mktpileman.com by September 25, 2015.



Hydraulic Auger

<https://www.youtube.com/watch?v=ttSMtoUvDvY>

Diesel Hammer

<https://www.youtube.com/watch?v=vBV12HevBJ4>

Vibratory Hammer

<https://www.youtube.com/watch?v=VhyBUidRb4U>

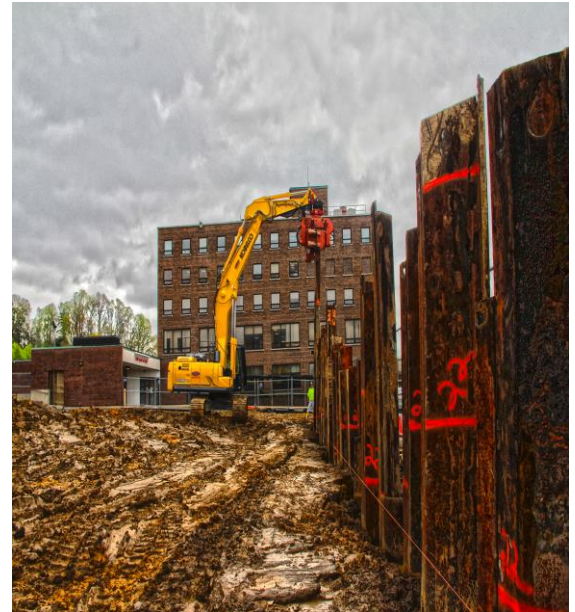
News from the Factory

If you think you may have a requirement it may be worthwhile to get your engine on order now to shorten lead times and lets us fit it into production in a timely manner.

MKT also has our ELS ready for rental or purchase. The ELS has the ability to handle a Drill, Diesel hammer or a Vibratory hammer.

To see the ELS in action with a hydraulic auger, vibratory hammer, or diesel hammer click one of the links to the left.

A Photo from Company Wrench of the MKT V-5Esc hard at work!



Website Information

As always please feel free to visit our websites for updated literature, photos, etc. If there is something you would like to see on our website, please send your request to Amie at abeckwith@mktpileman.com.

www.mktpileman.com

www.mve-stl.com

We have recently added a new video to our www.MKTpileman.com website that Company Wrench put together showing the MKT V-5Esc hard at work.

New MKT V-5Esc Side Clamp



New MKT V-5Esc